

NC-101 Intersection Improvement

From NC 306 (Ferry Rd) to SR 1700 (Adams Creek Rd)

Local ID: **CART40019-H**

Purpose: **Mobility**

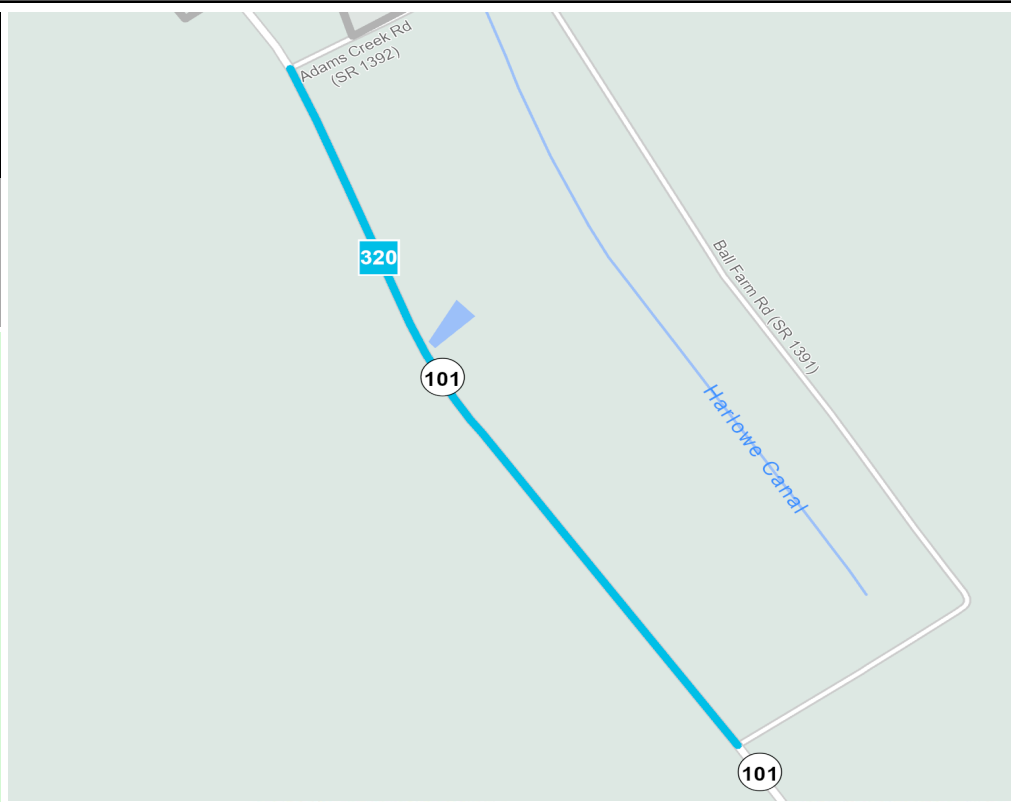
Improvement: **Improve Existing**

Identified Need

There is a need to improve mobility along the NC 101 corridor.

Recommendation

Improve the intersections along US 70 (Adams Creek Rd).



Local ID #	Improve	New Location	Local ID #	Improve	New Location
Congestion / Mobility	#	—	Interchange	⊙	□
Access Management / Operations	#	—	Bridge / Overpass	⊙	○
Modernization	#	—	Intersection	⊙	△
Other	#	—			

Proposal At A Glance

Highway Class	Modernization
Facility Type	Major Thoroughfare 2-lane
Typical Section	-
Section Options	-
Length (miles)	0.86
Existing ROW (feet)	100
Safety Risk Score	67

Proposal Data: 2019 Base Year 2050 Future Year

Improved Route	Existing	Without Proposal	With Proposal
Facility Type	Major Thoroughfare 2-lane	Major Thoroughfare 2-lane	Major Thoroughfare 2-lane
Travel Lanes	2	2	
Volume (vpd)	7600	8900	9000
Capacity (vpd)	16400	16400	16400

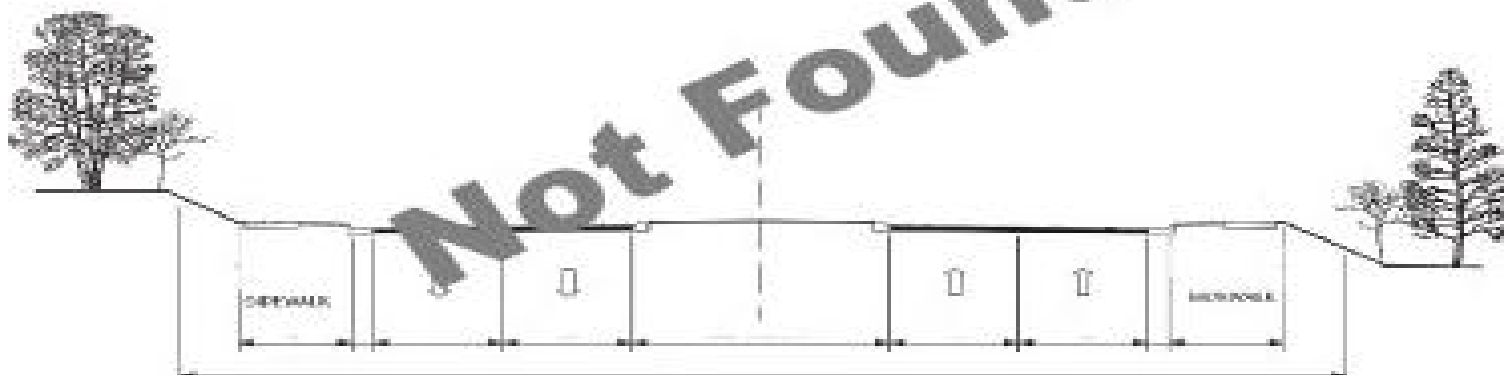
Capacity Data: Year

Facility will be Approaching Capacity (>80%)	-
Facility will be Over Capacity (>=100%)	-



Typical Section Options:

None

TYPICAL SECTION No.**Project History/Linkage to Other Plans**

This project is listed in SPOT (H230948). This project is one of the three parts of the intersection improvements listed in this SPOT submittal. The other two projects are in Craven County.

CTP Goal Analysis**Goals and Objectives Survey**

The vision for Carteret County is to have a safe, diverse, efficient, integrated, and environmentally sensitive and sustainable multi-modal transportation system for its residents, visitors, and businesses. The Carteret County CTP goals include: promoting a safer and more secure transportation network, creating a more efficient transportation system, providing an integrated and multimodal transportation network, supporting regional growth in the transportation network, preserving the social and environmental character of the region, extending the life of the transportation system by developing sustainable transportation solutions, and anticipating future needs of the area in terms of resiliency and flooding.

Public Comments

This Carteret County CTP survey was open from March 1st, 2023 to April 30th, 2023 and there was an English and Spanish version of the survey. There were a total of 439 participants and 1,387 comments as pins on the map were received. This project received 2 comments as pins during the online survey. The concerns were safety and congestion.

All environmental data in the database was considered. This Project is within 150 feet of:

- 4 Coastal Region Evaluation Of Wetland Significance Feature(s)
- 2 Flood Hazard Area Feature(s)

- 1 High Quality And Outstanding Resource Water Feature(s)
- 1 Landscape Habitat Indicator Guild Feature(s)
- 1 Natural Heritage Element Occurrence Feature(s)
- 5 Wetland Feature(s)
- 1 Lake And Pond Feature(s)
- 1 Target Local Watershed Feature(s)

This recommendation passes through one or more Census Blocks with the following characteristics:

- Between 0% and 25% identify as 65+
- Between 0% and 25% identify as African American
- Between 0% and 5% identify as Asian
- Between 1% and 5% identify as Hispanic and Latino
- 0% identify as Over 18 with Limited English Proficiency (LEP) - Asian and Pacific Islander
- 0% identify as Over 18 with Limited English Proficiency (LEP) - Indo-European
- 0% identify as Over 18 with Limited English Proficiency (LEP) - Other
- 0% identify as Over 18 with Limited English Proficiency (LEP) - Spanish
- 0% identify as Native American
- Between 1% and 5% identify as Some Other Race
- Between 5% and 10% identify as Two of More Races
- Between 15% and 25% identify as Below Poverty Line
- Between 0% and 15% identify as Households with No Car